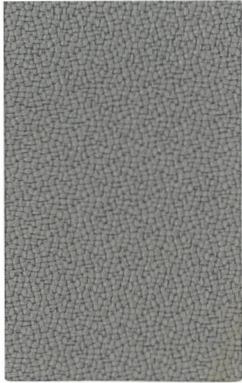




MOMENTUM
TEXTILES & WALLCOVERING

GROUPE
LACASSE

Carded Program
Programme carté



ORIGIN ALLOY
MT0966



TRADITION ASH
TD11



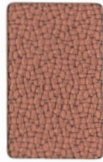
MARATHON RAIN
MA19



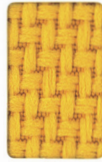
COVER CLOTH PLATINUM
CC16



WHEAT
MT0974



BLUSH
MT0967



SUN
TD21



GRAIN
TD14



TINT
MA22



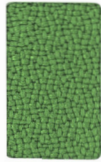
CARAVEL
MA12



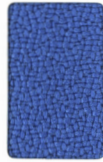
OAT
CC15



SORREL
CC19



CLOVER
MT0968



CYAN
MT0969



LATTE
TD17



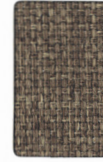
PEEL
TD18



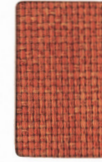
FLAX
MA15



ALERT
MA11



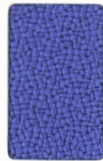
TAUPE
CC21



ZEST
CC24



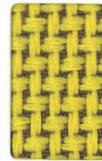
SEED
MT0970



VINCA
MT0972



ISLE
TD16



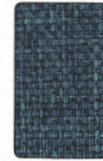
SPROUT
TD20



CLAY
MA13



SUNSET
MA21



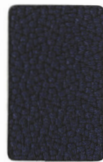
CYAN
CC04



SAVOR
CC17



VINTAGE
MT0973



SAPPHIRE
MT0433



BRANCH
TD12



WELD
TD23



FOLIAGE
MA16



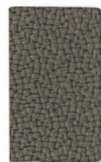
OZ
MA18



DELFT
CC05



VESPER
CC22



ARUNDEL
MT0413



IRON
MT0426



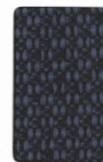
WASH
TD22



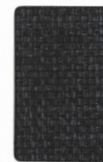
DISTANT
TD13



CYAN
MA14



TOILE
MA23



INDIGO
CC12



HICKORY
CC11



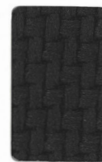
SHALE
MT0971



BASALT
MT0415



SLY
TD19



HIDDEN
TD15



STORM
MA20



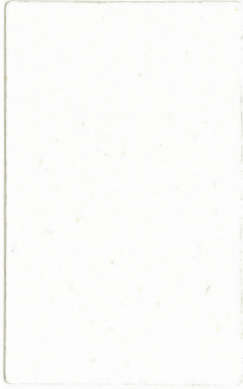
NOIR
MA17



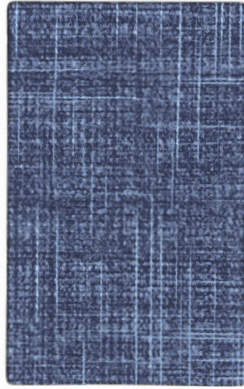
GRAPHITE
CC09



JET
CC13



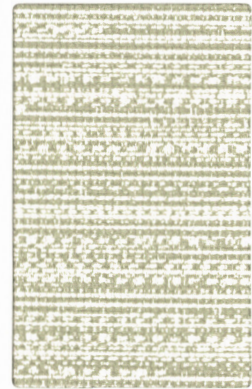
CANTER EPU SUMMER WHITE
MT0959



VANGUARD CV CALICO
VD10



EVO CV MIST
EV17



SANYA CV ARCTIC
SY20



TOASTY
MT0772



QUARRY
MT0766



LUNETTE
VD16



GILDED
VD15



ASH
EV10



ZEST
EV22



CYPRUS
SY22



NICKEL
SY27



ADOBE
MT0948



CITRUS
MT0950



SPROUT
VD21



SAVOR
VD19



CYAN
EV12



SAGE
EV20



FLAX
SY25



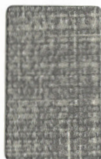
CLAY
SY21



RED
MT0957



NIMBUS
MT0764



FOIL
VD13



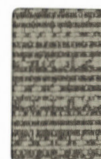
PEBBLE
VD17



PUMICE
EV19



TANGELO
EV21



PUMICE
SY29



THISTLE
SY32



EARTH
MT0173



TEAL GREEN
MT0960



CAVE
VD12



FRENCH
VD14



JETTY
EV15



MINK
EV16



FERN
SY24



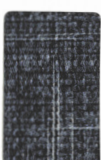
POOL
SY28



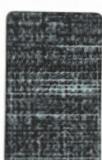
INK
MT0760



STORM
MT0767



POLARIS
VD18



SPRUCE
VD22



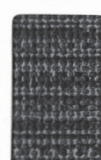
CYPRESS
EV13



BLUESTAR
EV11



DUSK
SY23



IRON
SY26



IRON
MT0761



ONYX
MT0176



SEQUOIA
VD20



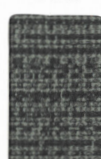
CARBON
VD11



INDIGO
EV14



ONYX
EV18











SLATE
SY31











SABLE
SY30

TECHNICAL INFORMATION

INFORMATIONS TECHNIQUES

| Width - Pattern | Fiber Content | Abrasion* (D.R.) | Lightfastness | Cleaning Code |
|--|--|------------------|----------------------|-------------------------------|
| 59" COVER CLOTH Crypton Green® Finish  | 56% Repreve® Post-Consumer Recycled Polyester, 44% Polyester | 200,000 | 40 Hours Class 4 | W Bleach Cleanable (10:1) |
| 54" MARATHON C-ZERO C-Zero Finish by Crypton®  | 75% Post-Consumer Recycled Polyester, 25% Polyester | 200,000 | 40 Hours Class 4 | WS |
| 58" ORIGIN  | 100% Post-Consumer Recycled Polyester | 282,000 | 40 Hours Class 4 | WS |
| 54" TRADITION C-ZERO C-Zero Finish by Crypton®  | 72% Post-Consumer Recycled Polyester, 28% Polyester | 200,000 | 40 Hours Class 4 | WS |
| 54" CANTER EPU  | 100% EPU Polyurethane | 1,000,000 | 200 Hours Class 4 | W Bleach Cleanable (4:1) |
| 54" EVO CV  | 100% Clean Vinyl / Phthalate Free | 1,000,000 | 200 Hours Class 4 | WS Bleach Cleanable (10:1) |
| 54" SANYA CV  | 100% Clean Vinyl / Phthalate Free | 220,000 | 200 Hours Class 5 | WS Bleach Cleanable (10:1) |
| 54" VANGUARD CV  | 100% Clean Vinyl / Phthalate Free | 100,000 | 200 Hours Class 4 | W Bleach Cleanable (10:1) |

| Largeur - Patron | Teneur en fibres | Abrasion* (D.F.) | Résistance à la lumière | Code de nettoyage |
|--|---|------------------|-------------------------|-----------------------------|
| 59" COVER CLOTH Fini Crypton Green®  | 56 % Polyester recyclé post-consommation Repreve®, 44 % Polyester | 200 000 | 40 Heures Classe 4 | W Eau de Javel (10 : 1) |
| 54" MARATHON C-ZERO Fini C-Zero de Crypton®  | 75 % Polyester recyclé post-consommation, 25 % Polyester | 200 000 | 40 Heures Classe 4 | WS |
| 58" ORIGIN  | 100 % Polyester recyclé post-consommation | 282 000 | 40 Heures Classe 4 | WS |
| 54" TRADITION C-ZERO Fini C-Zero de Crypton®  | 72 % Polyester recyclé post-consommation, 28 % Polyester | 200 000 | 40 Heures Classe 4 | WS |
| 54" CANTER EPU  | 100 % Polyuréthane EPU | 1 000 000 | 200 Heures Classe 4 | W Eau de Javel (4 : 1) |
| 54" EVO CV  | 100 % Vinyl propre / sans phtalate | 1 000 000 | 200 Heures Classe 4 | WS Eau de Javel (10 : 1) |
| 54" SANYA CV  | 100 % Vinyl propre / sans phtalate | 220 000 | 200 Heures Classe 5 | WS Eau de Javel (10 : 1) |
| 54" VANGUARD CV  | 100 % Vinyl propre / sans phtalate | 100 000 | 200 Heures Classe 4 | W Eau de Javel (10 : 1) |

ACT® Registered Certification Marks

*Results above 100,000 double rubs have not been shown to be an indicator of increased lifespan.

*Les résultats supérieurs à 100 000 doubles frottements n'ont pas été montrés être un indicateur de durée de vie accrue.

Carded program = 5 years.

Programme carté = 5 ans.



For memo samples, please contact ...
Pour des échantillons, s.v.p. contactez ...



99 Saint-Pierre, Saint-Pie QC Canada JOH 1WO
888.522.2773 • www.grounelacasse.com
Printed in the United States.

Information contained herein is subject to change without notice.



MOMENTUM
TEXTILES & WALLCOVERING

800-366-6839
memosamples.com

4283
GL539-0
3/22
1.5M

08994649