

MOMENTUM
T E X T I L E S

GROUPE
LACASSE

Healthcare Furniture Solutions
Solutions en mobilier de soins de santé



PACE CRYPTON AZURE
PC01



JUTE
PC05



HARVEST
PC04



GLEN
PC03



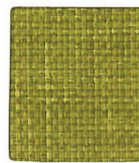
GENTEEL
PC02



COVER CLOTH PLATINUM
CC16



ANTIQUE
CC01



SORREL
CC19



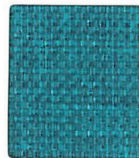
TAUPE
CC21



VESPER
CC22



SAVOR
CC17



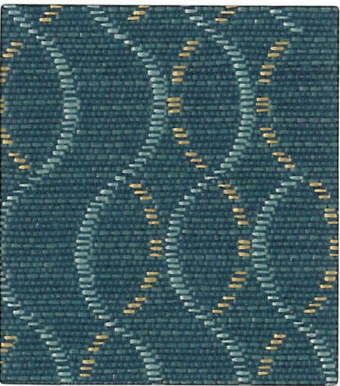
CYAN
CC04



COFFEE
CC03



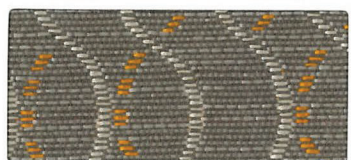
GRAPHITE
CC09



ASCEND COAST
AS03



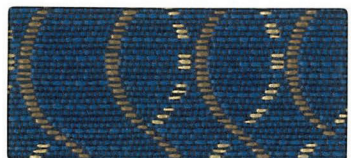
CALM
AS02



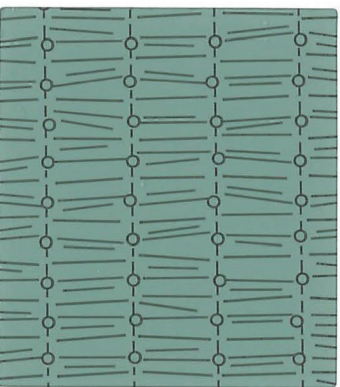
FLANNEL
AS09



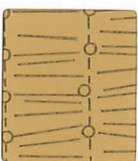
HARVEST
AS13



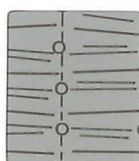
EVENING
AS08



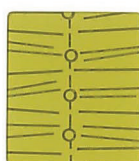
VELOCITY POND
VE10



SANDSTONE
VE12



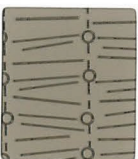
STEEL
VE14



ALOE
VE01



AZURE
VE02



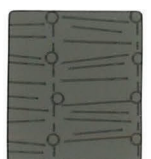
SYCAMORE
VE15



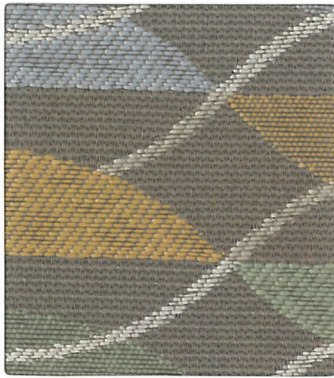
MALT
VE07



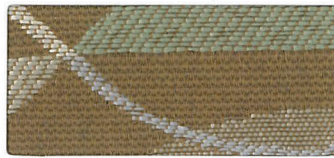
HOSTA
VE06



CHARCOAL
VE03



WAVER MOMENT
WA04



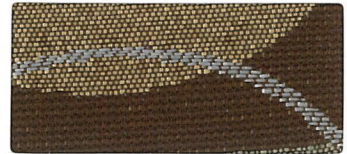
FLAX
WA03



RIVERSIDE
WA05



TRANQUIL
WA08



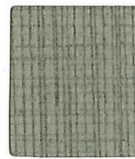
TERRAIN
WA07



BEELINE GEYSER
MT0113



EUCALYPTUS
MT0110



FOSSIL
MT0112



NIMBUS
MT0114



CORK
MT0108



MYTH
MT0837



PORTOBELLO
MT0117



FORGE
MT0111



WALNUT
MT0122



SPAN CRYPTON RESORT
SP04



OAT
SP03



BARK
SP01



VOYAGE
SP05



DOWNTOWN
SP02



OATH JUNIPER
OA16



SANDBAR
OA21



TAUPE
OA23



CANE
OA05



LODESTONE
OA17



DRIFTWOOD
OA12



MINERAL
OA19



CHOCOLATE
OA09



CHARCOAL
OA08

TECHNICAL INFORMATION

INFORMATIONS TECHNIQUES

Width - Pattern	Fiber Content	Finish	Abrasion (D.R.)	Lightfastness	Cleaning Code
56" ASCEND ☹️ [A] ✨ 🍃 ☆*	61% Repreve® Post Consumer Recycled Polyester, 39% Polyester	Crypton Green®	200,000	40 Hours Class 4	W Bleach Cleanable (10:1)
54" BEELINE ☹️ [A] ✨ 🍃 ☆*	100% Polyurethane / PVC Free	Antimicrobial, Antibacterial	500,000	200 Hours Class 4.5	W Bleach Cleanable (4:1)
59" COVER CLOTH ☹️ [A] ✨ 🍃 ☆*	56% Repreve® Post Consumer Recycled Polyester, 44% Polyester	Crypton Green®	200,000	40 Hours Class 4	W Bleach Cleanable (10:1)
55" OATH ☹️ [A] ✨ 🍃 ☆*	50% Repreve® Post Consumer Recycled Polyester, 50% Polyester	Crypton Green®	204,000	40 Hours Class 5	W Bleach Cleanable (10:1)
58.5" PACE CRYPTON ☹️ [A] ✨ 🍃 ☆*	39% Polyester, 34% Post Industrial Recycled Polyester, 27% Post Consumer Recycled Polyester	Crypton Green®	103,000	40 Hours Class 4	W Bleach Cleanable (10:1)
56.5" SPAN CRYPTON ☹️ [A] ✨ 🍃 ☆*	42% Polyester, 35% Post Industrial Recycled Polyester, 23% Post Consumer Recycled Polyester	Crypton Green®	100,000	40 Hours Class 4	W Bleach Cleanable (10:1)
54" VELOCITY ☹️ [A] ✨ 🍃 ☆*	100% Polyurethane / PVC Free	Antimicrobial, Antibacterial	500,000	200 Hours Class 4	W Bleach Cleanable (4:1)
56" WAVER ☹️ [A] ✨ 🍃 ☆*	63% Repreve® Post Consumer Recycled Polyester, 37% Polyester	Crypton Green®	120,000	40 Hours Class 4.5	W Bleach Cleanable (10:1)

Patron - Largeur	Teneur en fibres	Fini	Abrasion (D.F.)	Résistance à la lumière	Code de nettoyage
56" ASCEND ☹️ [A] ✨ 🍃 ☆*	61 % Repreve® polyester recyclé post consommation, 39 % polyester	Crypton Green®	200 000	40 Heures Classe 4	W Eau de Javel (10:1)
54" BEELINE ☹️ [A] ✨ 🍃 ☆*	100 % Polyuréthane / sans pvc	Antimicrobien, antibactérien	500 000	200 Heures Classe 4,5	W Eau de Javel (4:1)
59" COVER CLOTH ☹️ [A] ✨ 🍃 ☆*	56 % Repreve® polyester recyclé post consommation, 44 % polyester	Crypton Green®	200 000	40 Heures Classe 4	W Eau de Javel (10:1)
55" OATH ☹️ [A] ✨ 🍃 ☆*	50 % Repreve® polyester recyclé post consommation, 50 % polyester	Crypton Green®	204 000	40 Heures Classe 5	W Eau de Javel (10:1)
58.5" PACE CRYPTON ☹️ [A] ✨ 🍃 ☆*	39 % Polyester, 34 % polyester recyclé post industriel, 27 % polyester recyclé post consommation	Crypton Green®	103 000	40 Heures Classe 4	W Eau de Javel (10:1)
56.5" SPAN CRYPTON ☹️ [A] ✨ 🍃 ☆*	42 % Polyester, 35 % polyester recyclé post industriel, 23 % polyester recyclé post consommation	Crypton Green®	100 000	40 Heures Classe 4	W Eau de Javel (10:1)
54" VELOCITY ☹️ [A] ✨ 🍃 ☆*	100 % Polyuréthane / sans pvc	Antimicrobien, antibactérien	500 000	200 Heures Classe 4	W Eau de Javel (4:1)
56" WAVER ☹️ [A] ✨ 🍃 ☆*	63 % Repreve® polyester recyclé post consommation, 37 % polyester	Crypton Green®	120 000	40 Heures Classe 4,5	W Eau de Javel (10:1)

*ACT® Registered Certification Marks

*Results above 100,000 double rubs have not been shown to be an indicator of increased lifespan.

*Les résultats supérieurs à 100 000 doubles frottements n'ont pas été montrés être un indicateur de durée de vie accrue.

Carded program = 5 years.

Programme carté = 5 ans.



For memo samples, please contact ...
Pour des échantillons, s.v.p. contactez ...

GROUPE
LACASSE

99 St. Pierre, Saint-Pie (Quebec), Canada JOH 1W0

888.522.2773 • www.grouperlacasse.com

Printed in the United States.

Information contained herein is subject to change without notice.

MOMENTUM
T E X T I L E S

800-366-6839

memosamples.com

4156
GL390-0
9/16
2M