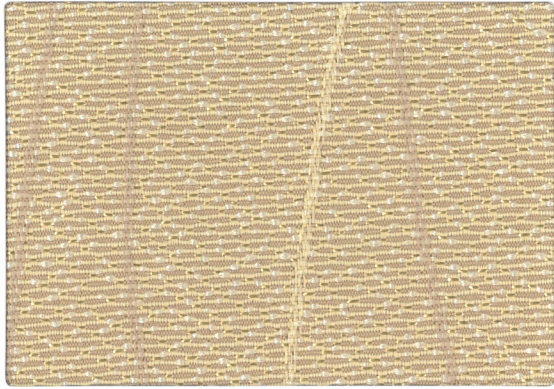
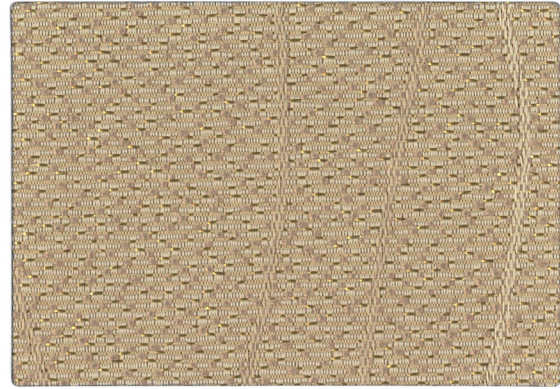


Meander & Universe

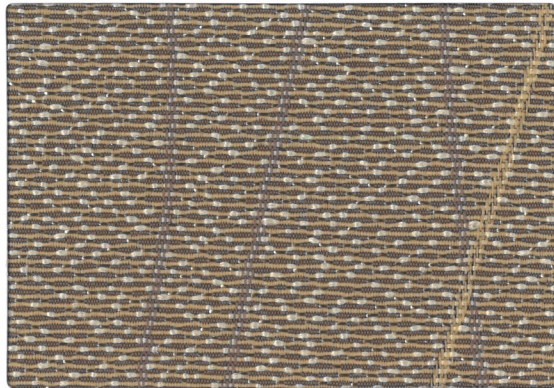
Grade 2



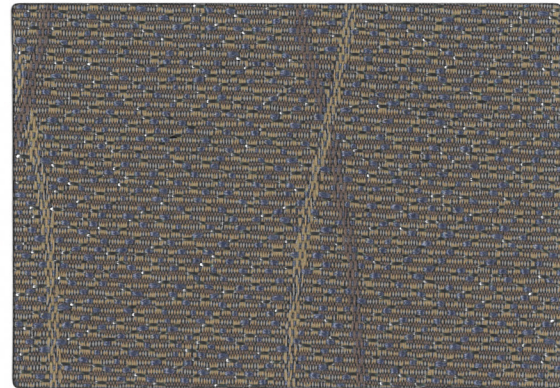
5L4 Meander Sandshell



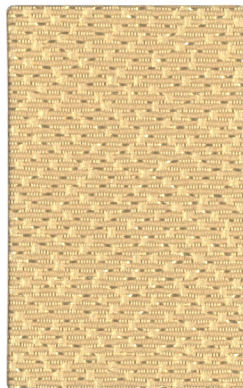
5L3 Overcast



5L1 Agate Taupe



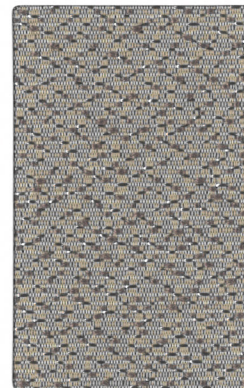
5L2 Nightshadow



5V2 Universe Crème Brûlée



5V8 Whitecap



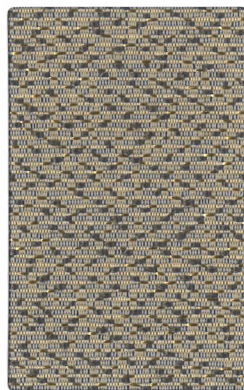
5V4 Mica



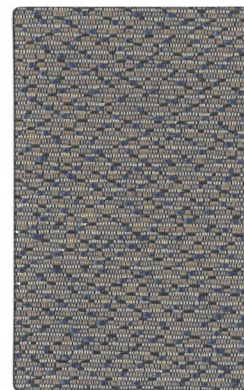
5V5 Milkyway



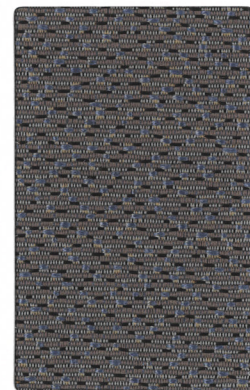
5V7 Wheat



5V6 Seneca





5V1 Cosmic





5V3 Depth

TECHNICAL INFORMATION

INFORMATIONS TECHNIQUES

| Width - Pattern | Fiber Content | Lightfastness | Repeat | Cleaning Code | Grade |
|---|--|---------------------|-----------------------|---------------|-------|
| 66" MEANDER  | 50% Post Consumer Recycled Polyester, 50% Polyester | 40 Hours Class 4 | 16 7/8" W x 16 1/8" L | WS | 2 |
| 66" UNIVERSE  | 50% Post Consumer Recycled Polyester, 50% Polyester | 40 Hours Class 4 | 3 1/2" W x 3 1/4" L | WS | 2 |

| Largeur - Patron | Teneur en fibres | Résistance à la lumière | Répétition | Code de nettoyage | Grade |
|---|---|-------------------------|-----------------------|-------------------|-------|
| 66" MEANDER  | 50 % Polyester recyclé post consommation, 50 % Polyester | 40 Heures Classe 4 | 16 7/8" L x 16 1/8" H | WS | 2 |
| 66" UNIVERSE  | 50 % Polyester recyclé post consommation, 50 % Polyester | 40 Heures Classe 4 | 3 1/2" L x 3 1/4" H | WS | 2 |

*ACT® Registered Certification Marks
*Marques de certification propriétés de l'ACT®

Roll Application / Sens d'application



Up The Roll Upholstery

Alignement vertical du recouvrement



For memo samples, please contact ...
Pour des échantillons, s.v.p. contactez ...

GROUPE
LACASSE

99 Saint-Pierre, Saint-Pie (Québec), Canada JOH 1WO
888.522.2773 • www.groupelacasse.com
Printed in the United States. Imprimée aux États-Unis.
Information contained herein is subject to change without notice.
Les informations figurant ici peuvent être modifiées sans préavis.

MOMENTUM
T E X T I L E S
800-366-6839
memosamples.com

4259
GL515-0
6/19
3M