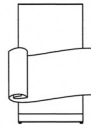


HM2 Coffee



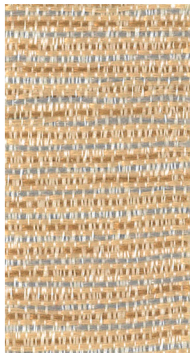
/ Shimmer  
Grade 1

1



Railroaded Upholstery  
*Alignement horizontal du recouvrement*

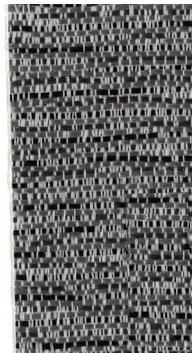
Panel Systems  
*Systèmes à panneaux*



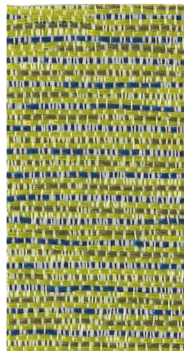
HM1 Sand



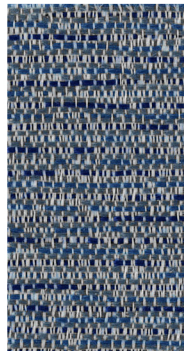
HM3 Dust



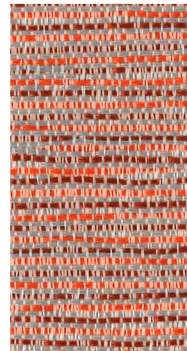
HM4 Charcoal



HM7 Grass



HM6 Sky



HM5 Sunset

**Technical Information**  
*Renseignements techniques*

**/ Shimmer**  
**Grade 1**



**SPECIFICATIONS**

**Weight / Poids**  
**Width / Largeur**  
**Content / Composition**  
**Repeat size / Répétition**  
**Roll Application / Sens d'application**

**10 oz ± 1 oz per linear yard / par verge linéaire**  
**66"**  
**100% Post-consumer recycled polyester / Polyester post-consumption recyclé**  
**7.125" Horizontal x 7.125" Vertical**  
**Railroaded upholstery / Alignement horizontal du recouvrement**

**PERFORMANCES**



**Flammability / Inflammabilité**  
**Cleaning / Nettoyage**

**This upholstery meets or exceeds the following ACT performance standards. / Ce recouvrement rencontre ou dépasse ces normes de performance ACT.**

**ASTM E-84 Class / Classe 1**

**Fabric may be cleaned with mild, water-free solvents or water-based cleaning agents or foam. Vacuuming or light brushing is recommended to prevent dust or soil build-up. / Nettoyer avec des agents dissolvants doux, à base d'eau, de mousse ou à sec. Utiliser un aspirateur ou brosser légèrement afin d'empêcher l'accumulation de poussière.**

**Dye lots may vary slightly from samples shown. / La teinte peut être différente des échantillons présentés.**

99 Saint-Pierre  
 Saint-Pie, Québec  
 Canada JOH 1W0

Tel. 450.772.2495 / 1.888.522.2773  
 Fax. 450.772.2632

[www.grounelacasse.com](http://www.grounelacasse.com)

